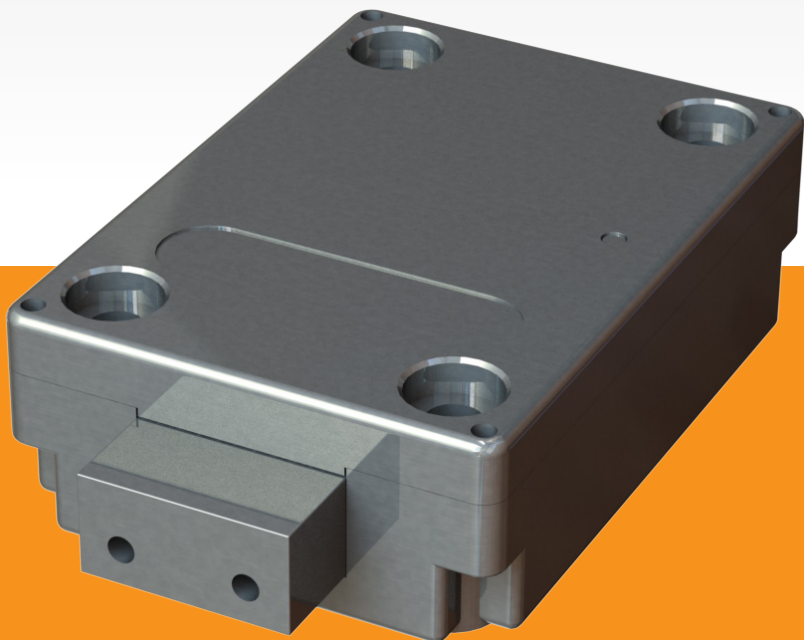




# Tantum Multi Level Software

User manual  
V02 EN



Made in The Netherlands

**M•LOCKS**



# M•LOCKS

## CONTENT INSTRUCTIONS FOR USE

- 1 Important instructions
- 2 Symbols and signals
- 3 Opening in standard mode
- 4 Opening with dual combo
- 5 Opening with time delay
- 6 Changing code
- 7 Activating silent alarm
- MANAGER INSTRUCTIONS**
- 8 Setup silent alarm
- 9 Setup dual mode
- 10 Change closing mode
- 11 Activating users
- 12 Activating users with dual mode
- 13 Disabling / enabling users
- 14 Deleting users
- 15 Deleting users in dual mode
- 16 Setting the time delay and open window time
- 17 Changing the delay setting
- 18 User audit
- 19 Lock audit
- 20 Set volume
- 21 Replacing battery
- 22 Troubleshooting

## 1 IMPORTANT INSTRUCTIONS

- Before using the lock, please read the instructions for use carefully.
- The instructions for use only relate to the lock itself and not to how to operate the safe.
- Ensure that you **only** program the lock while the **safe door is open**.
- After changing the code, always try the code several times with the safe door open.
- **Only after several positive function tests (opening / closing) the safe door may be closed.**
- Each key entry is confirmed by an audible tone and visual signal. These signals are not referred to in the description that follows.
- Acoustic signals are always accompanied by the same optical signals.
- You have a maximum of 10 seconds for each key entry. If you do not make an entry via the keypad during this period of 10 seconds, the entry procedure will automatically abort. You must then start again from the beginning.
- After entering a valid code, a double signal sounds. An invalid entry will trigger a long tone.
- After entering an invalid code the first attempt, wait 20 seconds before entering the code again.
- If the code is entered incorrectly on four consecutive occasions, the keypad and the lock will be disabled for 5 minutes. During this period, the LED will flash every 10 seconds and you will hear a long tone when attempting to make an entry. Entering an incorrect code on two further occasions after the keypad has been re-enabled will trigger a new keypad lock-out period of 5 minutes.
- The lock works with a six digit code. In some cases it may be that the lock requires a 7-digit code. For simplicity, it is mentioned only one operation with 6-digit code in this guide.
- **At the time of delivery**, the lock is set to the standard **Manager Code of 1 2 3 4 5 6**. Change this code immediately to your own choice of Manager Code. Do not use personal or other simple data which can easily be found out for your Manager Code
- If needed, the owner of the Manager Code can add up to 9 codes / users. This code must be immediately changed by the user in a code of their own choice. Do not use personal or other simple data for your user code.
- User 9 always has an override code and dual mode. This means that user 9, even with the time delay activated, can open immediately if any other valid code is entered after entering his own code. If users are only allowed to open with time delay, user 9 should not be activated.
- Please keep the code always carefully and protect it against improper use by unauthorized persons.
- When typing in your code cover the keypad so no one near you can see your code.
- Depending on the used lock / keypad and the way the lock is installed, there are several ways to open and to close a safe. By example with a lever or by turning the keypad. Please contact your safe supplier for more information about your specific situation.

**!** Caution! After completing the locking process, please check by operating the boltwork several times that the locking function of the lock is available. The boltwork must not turn.

**!** Our products fulfil the EN1300 requirements regarding resistance against electrostatic charge. In fact it may happen that the electrostatic charge of a user exceeds the extreme value many times. That's why we are asking you to touch the metal surface of the safe for discharging before operating the lock.

**!** **Caution! Don't forget your code, otherwise the lock can not be used anymore!**

**!** **Caution!**

- The lock has been designed for use in a temperature range from +10°C to +50°C and a non-condensing humidity range from 30% to 80%.
- It may only be cleaned with a moist cloth (do not use aggressive cleaning agents).
- The lock may only be installed by qualified fitters.
- The lock may not be lubricated.
- Never open the lock housing. If it is necessary to disassemble the hardware, only do so in accordance with the technical instructions. If you fail to do so, the lock may no longer function properly and you will forfeit your right to warranty.

**2** **SYMBOLS AND SIGNALS**

double audible tone, **correct entry**



LED flashes



digit on keypad



long audible tone, **incorrect entry**



LED illuminated



press and hold

**3** **OPENING IN STANDARD MODE****For example!**

Enter the code [i.e. 1-1-1-1-1-1]

After entering a valid code, a double signal sounds. The lock will open, after which the door can be opened. If the door is not opened within 5 seconds, the lock will automatically lock again in case “Automatic Closing” is active. A signal will sound every 10 seconds as long as the lock is open when “Push to Close” is active.

When door/bolt work are closed again, the lock will close, either automatically by closing the door / bolt work (Automatic Closing) or by pushing a random digit on the keypad (Push to Close).

Three long tones will sound when during opening or closing the lock bolt is blocked. Entering the code again will close, respectively open the lock again. Remove the obstruction and re-enter the code.

## 4 OPENING WITH DUAL MODE

For example!



and



Two users are required to open with dual mode. For example 1-1-1-1-1-1 and 2-2-2-2-2-2.

Enter codes (i.e. 1-1-1-1-1-1 and 2-2-2-2-2-2). After entering valid codes, a double signal sounds.

The lock will open, after which the door can be opened. If the door is not opened within 5 seconds, the lock will automatically lock again in case "Automatic Closing" is active. A signal will sound every 10 seconds as long as the lock is open when "Push to Close" is active.

When door/bolt work are closed again, the lock will close, either automatically by closing the door / bolt work (Automatic Closing) or by pushing a random digit on the keypad (Push to Close).

Three long tones will sound when during opening or closing the lock bolt is blocked. Entering the codes again will close, respectively open the lock again. Remove the obstruction and re-enter the codes.

## 5 OPENING WITH TIME DELAY

For example!



Enter the code (i.e. 1-1-1-1-1-1), after entering a valid code, a double signal sounds and time delay starts. During time delay expires, the light flashes every 2 seconds. After time delay has elapsed, a double signal sounds and the open window starts.

For example!



During the open window, the light flashes and the locks beeps, every second. To open the lock, a valid code has to be entered again during the open window. After entering a valid code, a double signal sounds. The lock will open, after which the door can be opened. If the door is not opened within 5 seconds, the lock will automatically lock again in case

"Automatic Closing" is active. A signal will sound every 10 seconds as long as the lock is open when "Push to Close" is active.

When door/bolt work are closed again, the lock will close, either automatically by closing the door / bolt work (Automatic Closing) or by pushing a random digit on the keypad (Push to Close).

If the open window expires without entering a valid code, the lock is secured again with time delay.

User 9 always has an override code and dual mode. This means that user 9, even with the time delay activated, can open immediately if any other valid code is entered after entering his own code.

If users are only allowed to open with time delay, user 9 should not be activated.

If the lock is set to dual mode, one valid code starts time delay. During the open window, two valid codes have to be entered, to open the lock.

Press a random digit on the keypad to abort time delay counting.

Three long tones will sound when during opening or closing the lock bolt is blocked. Entering the code again will close, respectively open the lock again. Remove the obstruction and re-enter the code.

## 6 CHANGING CODE (WITH THE LOCK OPEN)



Press and hold '0' until a double signal sounds. The LED will illuminate when performing the following actions:

### For example!



- Enter the old code 🎵🎵



- Select your new personal code. Enter the new code 🎵🎵



- Enter the new code again 🎵🎵

If an incorrect code is entered on the second occasion, a long signal sounds and the old code remains valid.

## 7 ACTIVATING SILENT ALARM

---

If, by set up, silent alarm is programmed and the lock is connected to an alarm system.

### For example!



In case of a hold up situation, a silent alarm can be sent by entering the last digit + 1. If the last number is a 9, you have to enter 0, to send a silent alarm.

For example: Valid code 2-2-2-2-2-2, alarm will be sent by entering: 2-2-2-2-2-3. This code works as a valid code. The silent alarm is indiscernibly for an outsider.



## MANAGER INSTRUCTIONS

### 8 SETUP SILENT ALARM

If, by set up, silent alarm is programmed and the lock is connected to an alarm system through an alarm box, an alarm code (regular opening code on which the last digit has been raised by 1) will send an alarm signal to the alarm system.

**Setting up silent alarm is only possible when the lock is in factory settings (manager code 123456, no users active)**

**Due to the certification of the lock it is possible to have a 6-digit code with a manager and up to 4 users or a 7-digit code with a manager and up to 9 users.**

#### SET UP SILENT ALARM WITH 6-DIGIT CODE AND UP TO 4 USERS



Press and hold '6' until a double signal sounds. The LED will illuminate when performing the following actions:

**For example!**



- Enter the Manager Code 🎵



- Enter '4' to install silent alarm with a 6-digit code and 4 users. Silent alarm is now active. A maximum of 4 users (random ID1-9) can be activated.

#### SET UP SILENT ALARM WITH 7-DIGIT CODE AND UP TO 9 USERS



Press and hold '6' until a double signal sounds. The LED will illuminate when performing the following actions:

**For example!**



- Enter the Manager Code 🎵



- Enter '5' to install silent alarm with a 7-digit code and 9 users. Silent alarm is now active. All opening codes have 7 digits now.

**The Manager Code is now 1-2-3-4-5-6-7**

## REMOVING SILENT ALARM

Silent alarm can only be removed when all users have been deactivated and the Manager Code has been set to 123456{7}.



Press and hold '6' until a double signal sounds. The LED will illuminate when performing the following actions:

**For example!**



- Enter the Manager Code 🎵🎵



- Enter '0' to remove silent alarm.

**If the lock had a 7-digit code it has been changed to a 6-digit code.**

**The Manager Code is 1-2-3-4-5-6.**

## 9 SET UP DUAL MODE

When dual mode is set, two different codes must always be entered to open the lock. This can be both the Manager Code and a user code as well as two user codes.

**Set up dual mode is only possible when the lock opens on a 6-digit code.**

### ACTIVATE DUAL MODE



Press and hold '8' until a double signal sounds. The LED will illuminate when performing the following actions:



- Enter the Manager Code 🎵🎵



- Enter '1' to install dual combo.

Dual combo is now active. As long as there are no users active the manager can open on his own. As soon as one or more users have been activated 2 codes will have to be entered to open the lock.

**When the manager wants to implement changes to the lock a random active code will have to be entered first. (except for the keypad check, changing the code and adjusting the volume).**

## DEACTIVATE DUAL MODE (NO USERS ACTIVE)



Press and hold '8' until a double signal sounds. The LED will illuminate when performing the following actions:



- Enter the Manager Code



- Enter '0' to deactivate dual mode.

**The manager and all users can open again alone.**

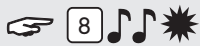
## DEACTIVATE DUAL MODE (ONE OR MORE USERS ACTIVE)

Enter random user code.

**For example!**



- Enter random user code



Press and hold '8' until a double signal sounds. The LED will illuminate when performing the following actions:



- Enter the Manager Code



- Enter '0' to deactivate dual combo.

**The manager and all users can open again alone.**

## 10 CHANGING CLOSING MODE

The default closing mode is Push To Close. The lock will close by pushing a random digit on the keypad, after door and bolt work have been closed. The motor lock can also close automatically when door/ bolt work is closed (Automatic Closing). To achieve "Automatic Closing" a door-/bolt work switch (NC=Normally Closed) has to be connected to the lock.

## ACTIVATE AUTOMATIC CLOSING

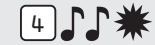
Only allowed if a door and/or bolt work switch is connected to the lock.



Press and hold „8“ until a double signal sounds. The LED will illuminate during the following actions:



- Enter the Manager Code 🎵🎵



- Enter „4“ to activate “Automatic Closing”

The lock closes automatically after closing door/bolt work.

## DEACTIVATE AUTOMATIC CLOSING



Press and hold „8“ until a double signal sounds. The LED will illuminate during the following actions:



- Enter the Manager Code 🎵🎵



- Enter „3“ to deactivate “Automatic Closing”

To close the lock a random digit has to be pushed on the keypad. (except \* and #)

## 11 ACTIVATING USER



Press and hold ‘1’ until a double signal sounds. The LED will illuminate when performing the following actions:

### For example!



- Enter your personal Manager Code 🎵🎵



- Enter user ID 1-9 (only if more than 1 user is installed)



- Enter the new User Code 🎵🎵



- Enter the new User Code again 🎵🎵

**When time delay is active on the lock, user 9 can only be activated during the open window time.**

## 12 ACTIVATING USERS IN DUAL MODE

Enter a random User Code when one or more users are active. If there are no users active this step can be skipped.

**For example!**



- Enter random User Code 🎵🎵



Press and hold '1' until a double signal sounds. The LED will illuminate when performing the following actions:



- Enter your personal Manager Code 🎵🎵



- Enter user ID 1-9 (only if more than 1 user is installed)



- Enter User Code 🎵🎵



- Enter User Code again 🎵🎵

## 13 DISABLING / ENABLING USERS (NOT ACTIVE IN DUAL MODE!)



Press and hold '2' until a double signal sounds. The LED will illuminate when performing the following actions:

### DISABLE USERS:

For example!



- Enter your personal Manager Code 🎵🎵



- Enter „0” to disable users.

**Only the manager can open. All users are disabled.**

### ENABLE USERS:

For example!



- Enter your personal Manager Code 🎵🎵



- Enter „1” to enable users.

**Manager and users can open.**

## 14 DELETING USERS



Press and hold '3' until a double signal sounds. The LED will illuminate when performing the following actions:

For example!



- Enter your personal Manager Code 🎵🎵



- Enter user ID of the user that has to be deleted 🎵🎵

The user has been deleted. To activate user again please refer to function “activate user”.

## 15 DELETING USERS IN DUAL MODE

Enter a random User Code

**For example!**



- Enter random User Code 🎵🎵



Press and hold '3' until a double signal sounds. The LED will illuminate when performing the following actions:

**For example!**



- Enter your personal Manager Code 🎵🎵



- Enter User ID of the user that has to be deleted. 🎵🎵

The user has been deleted. To activate user again please refer to function “activate user”.

## 16 SETTING THE TIME DELAY AND OPEN WINDOW TIME

**Time delay:** The time between the first and second code entry in minutes.

**Open window time:** The period of time in minutes during which the code can be entered a second time and the lock can be opened.

**Changing or deleting the time delay values can only be done during open window time.**

**When Dual mode is active, an active user code has to be entered first.**



Press and hold '9' until a double signal sounds. The LED will illuminate when performing the following actions:

**For example!**



- Enter the Manager Code 🎵🎵

**For example!**



- Enter the delay setting and open window time. Time delay min. 01 - max. 99 minutes.  
Open window time min. 01 - max. 19 minutes.  
In this example: 2602 for **a delay of 26 minutes** and **an open window time of 2 minutes** 🎵🎵.



- Enter the delay setting and open window time again 🎵🎵  
The time delay and open window values are directly activated for all codes.

## 17 CHANGING THE DELAY SETTING AND OPEN WINDOW

---

**The delay setting can only be changed or deleted during the open window time.**

**For example!**



Enter a valid code. Time delay starts, the light flashes. After the time delay period the open window time starts. The LED flashes 1x a second and beeps.

**When Dual mode is active an active user code has to be entered first.**



Press and hold '9' until a double signal sounds. The LED will illuminate when performing the following actions:

**For example!**



- Enter the Manager Code 🎵🎵



- Delete the delay and open window time by entering **00 for the delay setting** and **01 for the open window time**.



- Enter the delay setting and open window time again 🎵🎵

## 18 USER AUDIT

---

**When Dual mode is active an active user code has to be entered first.**





Press and hold '7' until a double signal sounds. The LED will illuminate when performing the following actions. **Listen to tone signals!**

**For example!**



- Enter the Manager Code



- Enter „0“ to open the user audit.



- Enter 1, 2, 3, 4, 5, 6, 7, 8, 9 to check the ID's or 0 to end the user audit.

Double signal = active user with code

One signal = active user without code (or disabled)

Long signal = user not active

**For example!**



User 4 is an active user with code.



- Enter „0“ to end the user audit.

## 19 LOCK AUDIT

For auditing a lock, a special software and hardware are required.

**Warning! Downloading the lock audit can only be done when the lock is open.**

Start the PC software and connect the lock to the PC with the audit cable.

When Duals mode is active an active user code has to be entered first.




Press and hold '7' until a double signal sounds. The LED will illuminate when performing the following actions:

**For example!**



- Enter the Manager Code



- Enter „1” to open the lock audit. 
- The LED flashes during the following actions.  
Download the lock audit with the audit software.



- Enter „0” to end the lock audit.

## 20 SET VOLUME


---






Press and hold '4' until a double signal sounds. The LED will illuminate when performing the following actions:

### For example!



- Enter your personal Manager Code 

Enter the desired volume where:

-  = half volume
-  = full volume
-  = silent (only a click when the LED lights up)

## 21 REPLACING THE BATTERY

---



If the lock emits a series of audible tones when opened, the battery is almost exhausted and must be replaced immediately.

You may **only use 9V ALKALINE Duracell, Duracell Industrial, Procell or Energizer alkaline batteries.**

### Battery compartment in entry unit

Open the battery compartment and replace the battery by a new one.

### Battery compartment inside the safe

In case of keypads starting with ST40xx and DE20xx, the battery compartment is located inside the safe. If the battery is completely exhausted, hold a fresh battery pressed against the poles on the front of the keypad, while entering the code, until the lock opens completely.

Open the door and locate the battery compartment. Open the battery compartment, remove the old battery and connect a new battery. Close the battery compartment again. Please contact the safe manufacturer for information about your installation situation.

**Please dispose of batteries in accordance with local regulations**

## 22 TROUBLESHOOTING

**In the event of a fault with an electronic lock, always first replace the battery for a new 9V alkaline battery (Duracell, Procell or Energizer).**

### **The lock is not responding.**

Replace the battery again with a new 9V alkaline battery (Duracell, Procell or Energizer). If the lock still does not respond when you press a key, please contact your safe dealer.

#### **a. Check the keypad**

If the lock does not react, first follow the procedure below, to check if your keypad is working.



Press and hold key '5' until a double signal sounds. The LED will illuminate when performing the following actions:



Press all the keys one by one. If the key is OK a double signal sounds, if the key is not OK, a long signal sounds. the test will be aborted.

If one or more keys do not operate properly, please contact your supplier.

#### **b. The lock does not emit any audible tones at all**

The lock does not emit an audible tone when a key is pressed. The battery is exhausted, replace the battery. See point 21.

#### **c. I have forgotten my code**

For security reasons, M-LOCKS does not provide a code that you can use to open your lock. Please contact your supplier.

### **The lock is difficult to move and open**

This is probably a problem with the lock bar mechanism, inside the safe door, and not a problem of the lock itself. This manual only relates to the lock and not the complete safe. Please contact the manufacturer of the safe in order to resolve this problem.



**M-LOCKS BV**

Vlijtstraat 40

7005 BN Doetinchem

The Netherlands

---

---

---

**WWW.M-LOCKS.COM**